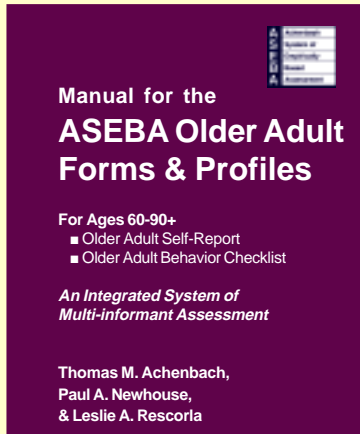
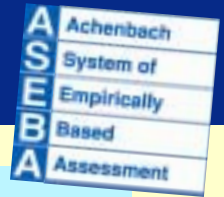


Announcing . . .

The Older Adult Self-Report (OASR) & Older Adult Behavior Checklist (OABCL) for Ages 60-90+



By T. Achenbach, Ph.D., & P. Newhouse, M.D.

Rapid, economical assessment of emotional, behavioral, social, & cognitive problems & adaptive functioning, based on self-reports & collateral reports:

- Valuable tools for psychiatrists, psychologists, gerontologists, family practitioners, social workers, counselors, & others who serve older adults
- Normed by age & gender
- Profiles scored by hand or by the Assessment Data Manager (ADM)
- Friends, Spouse/Partner, & Personal Strengths scales
- Empirically based syndromes & DSM-oriented scales
- Total Problems & Critical Items scales
- Narrative reports of findings
- Side-by-side displays of scores for up to 8 respondents per case

The user-friendly *Manual* for the OASR & OABCL includes:

- Features of the OASR & OABCL, their scales, & profiles
- Cross-informant comparisons
- Practical applications to diverse cases in many settings
- Construction, norming, & psychometrics of scales
- Research applications

See inside for details of older adult instruments, plus instruments for ages 18-59

Tel: 802-264-6432 • Fax: 802-264-6433 • Web: www.ASEBA.org • E-mail: mail@ASEBA.org

New! The OASR & OABCL for Ages 60-90+

Older Adult Self-Report (OASR) Older Adult Behavior Checklist (OABCL)

Easy-to-read large print

Self-administered in 15-20 minutes, the OASR obtains self-reports of diverse aspects of adaptive functioning and problems. The OABCL is a parallel form for obtaining reports from people who know the person being assessed, including spouse, partner, family members, friends, caregivers, home health aides, residential staff, and health care providers.

The OASR and OABCL are scored on profiles that make it easy to see similarities and differences between self-reports and reports by other people. The profiles display scale scores in relation to gender- and age-specific norms. Clerical staff can score profiles by hand in 5-10 minutes or by computer in about 2 minutes. The ADM Computer Module for Ages 60-90+ compares OASR and OABCL scores on individual problem items, personal strengths, and problem scales.

The OASR and OABCL can greatly improve assessment in a variety of contexts, such as: psychiatric and psychological evaluations; medical care, including routine care and evaluation of functioning following events such as strokes, cardiac problems, falls, and illnesses; following significant life changes, such as the illness or loss of a loved one, moves to retirement communities, assisted living, and nursing homes; and evaluations before and after planned changes and interventions. To measure changes in functioning, it is especially helpful to have the forms completed at intervals, such as 2 months, to determine whether functioning is improving, worsening, or remaining stable.

The profiles for scoring the OASR and OABCL include normed scales for adaptive functioning, empirically based syndromes, DSM-oriented scales, critical items, and total problems. The *Manual for the ASEBA Older Adult Forms & Profiles* fully documents the scales, their reliability, and their validity. The *Manual* also illustrates numerous clinical and research applications of the OASR and OABCL.

Empirically Based Syndromes

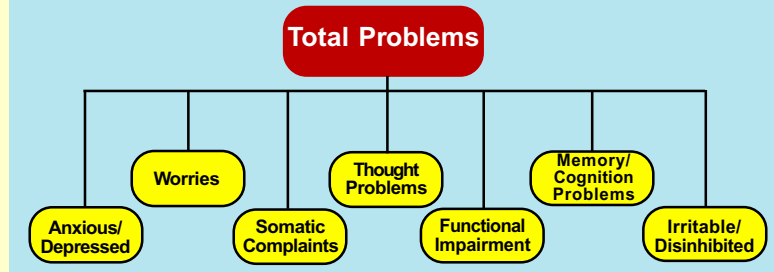
The following cross-informant syndromes were derived from factor analyses of the the OASR and OABCL.

- ◆ Anxious/Depressed
- ◆ Worries
- ◆ Somatic Complaints
- ◆ Functional Impairment
- ◆ Irritable/Disinhibited
- ◆ Thought Problems
- ◆ Memory/Cognition Problems

Computer-scored and hand-scored profiles are available.

Older Adult starter kits are also available. See pp. 5-6.

Older Adult Empirically Based Syndromes



DSM-Oriented Scales

The DSM-oriented scales were constructed by having experienced psychiatrists and psychologists from 7 cultures identify ASEBA adult items that are very consistent with DSM-IV categories. The scales are:

- ◆ Depressive Problems
- ◆ Anxiety Problems
- ◆ Somatic Problems
- ◆ Dementia Problems
- ◆ Psychotic Problems
- ◆ Antisocial Personality Problems

What you need for computer-scoring:

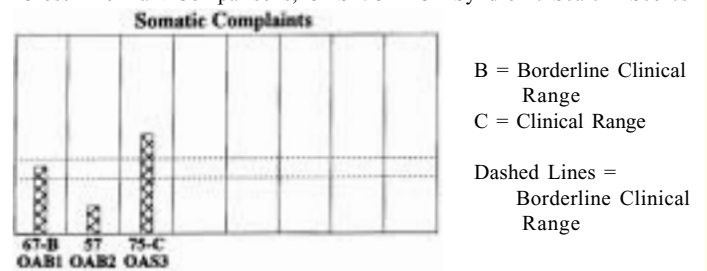
Item

- ✓ 011 Older Adult Self-Report/60-90+ (OASR)
- ✓ 021 Older Adult Behavior Checklist/60-90+ (OABCL)
- ✓ 015 Older Adult *Manual*
- ✓ 025 ADM Ages 60-90+ module

What you need for hand-scoring:

- ✓ 011 Older Adult Self-Report/60-90+ (OASR)
- ✓ 021 Older Adult Behavior Checklist/60-90+ (OABCL)
- ✓ 012 OASR hand-scoring profiles for men
- ✓ 013 OASR hand-scoring profiles for women
- ✓ 018 OASR DSM-oriented profiles for men & women
- ✓ 022 OABCL hand-scoring profiles for men
- ✓ 023 OABCL hand-scoring profiles for women
- ✓ 024 OABCL DSM-oriented profiles for men & women
- ✓ 014 OASR-OABCL templates (same for both forms)
- ✓ 015 Older Adult *Manual*

Cross-Informant Comparisons, OASR/OABCL Syndrome Scale *T* Scores



ASR & ABCL for Ages 18-59

Adult Self-Report/18-59 (ASR)

Adult Behavior Checklist/18-59 (ABCL)

Self-administered in 15-20 minutes, the ASR obtains adults' self-reports of diverse aspects of adaptive functioning and problems. The ABCL is a parallel form for obtaining reports from people who know the adult well. Both forms are valuable for assessing adults in mental health, forensic, counseling, medical, substance abuse, and other settings. They are also especially valuable for assessing parents of children seen for mental health services. By having parents complete ASRs to describe themselves and ABCLs to describe their spouse or partner, practitioners can obtain profiles that highlight crucial agreements and disagreements between parents' self-descriptions and other people's descriptions of their behavior.

The profiles for scoring the ASR and ABCL include normed scales for adaptive functioning, empirically based syndromes, substance use, Internalizing, Externalizing, and Total Problems. In addition, the ASR and ABCL profiles feature DSM-oriented scales consisting of items that experts from 10 cultures identified as being very consistent with DSM-IV diagnostic categories.

The profiles also include a Critical Items scale consisting of items of particular concern to clinicians. The profiles display scale scores in relation to norms for each gender at ages 18-35 and 36-59, based on national probability samples. The *Manual for the ASEBA Adult Forms & Profiles* fully documents the scales, their reliability, and their validity. The *Manual* also illustrates numerous clinical and research applications of the ASR and ABCL.

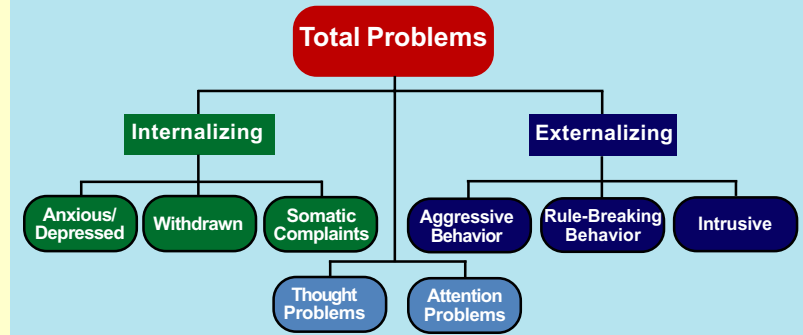
Empirically Based Syndromes

The following cross-informant syndromes were derived from factor analyses of the ASR and ABCL:

- ◆ Anxious/Depressed
- ◆ Withdrawn
- ◆ Somatic Complaints
- ◆ Thought Problems
- ◆ Attention Problems
- ◆ Aggressive Behavior
- ◆ Rule-Breaking Behavior
- ◆ Intrusive

Both forms have parallel Substance Use, Critical Items, Internalizing, Externalizing, and Total Problems scales.

Adult Empirically Based Syndromes



DSM-Oriented Scales

The DSM-oriented scales were constructed by having experienced psychiatrists and psychologists from 10 cultures identify ASR and ABCL items that are very consistent with DSM-IV categories. The scales are:

- ◆ Depressive Problems
- ◆ Anxiety Problems
- ◆ Somatic Problems
- ◆ Avoidant Personality Problems
- ◆ Attention Deficit/Hyperactivity Problems
- ◆ Antisocial Personality Problems

Inattention and *Hyperactivity-Impulsivity* subscales are also scored from the Attention Deficit/Hyperactivity Problems scale.

Computer-scored and hand-scored profiles are available.

What you need for computer-scoring:

- | Item # |
|---|
| ✓ 111 Adult Self-Report/18-59 (ASR) |
| ✓ 121 Adult Behavior Checklist/18-59 (ABCL) |
| ✓ 105 Adult <i>Manual</i> |
| ✓ 100 ADM Ages 18-59 module |

What you need for hand-scoring:

- ✓ 111 Adult Self-Report/18-59 (ASR)
- ✓ 121 Adult Behavior Checklist/18-59 (ABCL)
- ✓ 112 ASR hand-scoring profiles for men
- ✓ 113 ASR hand-scoring profiles for women
- ✓ 118 ASR DSM-oriented profiles for men & women
- ✓ 122 ABCL hand-scoring profiles for men
- ✓ 123 ABCL hand-scoring profiles for women
- ✓ 128 ABCL DSM-oriented profiles for men & women
- ✓ 114, 124 ASR & ABCL templates
- ✓ 105 Adult *Manual*

Adult starter kits are available. See page 5.

Assessment Data Manager (ADM)

✓ ADM-to-SPSS Utility

The ADM-to-SPSS Utility lets you import data from ADM into SPSS. These data are ready for your analyses, formatted, labelled, and with missing values defined.

✓ Computer Starter Kits Available

See the order form for computer starter kits for the Ages 18-59 and 60-90+ modules. Save \$35-\$45 off the price of the items bought separately.

✓ Multiple Copy Discounts

For users whose computer workstations are not connected by a network, call for discounts on multiple copies of software.

✓ Local Area Network Licenses

Multiple users can share a single installation of ADM and modules on a network server with the purchase of a network user license. We do not support Wide Area Networks (WAN) or Thin Client Networks with ADM.

✓ Free Technical Support

See the support site at www.ASEBA.org for FAQs and ADM technical information. For questions or problems not addressed in the site, submit an on-line technical support request or call 802-264-6432.

How To Order

Free shipping within 48 states for all on-line orders and other orders of \$75 or more!

See below

Business Hours: Our business hours are Monday through Friday, 8:00 am – 4:30 pm Eastern time.

We accept orders by fax, mail, or online only. We do not accept orders by phone. Orders charged to MasterCard or VISA or accompanied by numbered purchase order forms can be faxed to 802-264-6433, 24 hours a day. Checks, money orders, and purchase orders should be made payable in U.S. dollars to ASEBA. Secure on-line ordering is available at www.ASEBA.org

Terms: All orders must be accompanied by payment or be guaranteed by MasterCard, VISA, or numbered purchase order forms (net 30 days).

Shipping: Free United Parcel Service (UPS) ground delivery to the 48 contiguous states for all on-line orders and other orders \geq \$75. For orders $<$ \$75, please add \$5.00 for shipping. For addresses outside the 48 contiguous states: we will provide surface, air, and UPS rates; based on these rates, please add shipping cost in the space provided on page 7.

Next Day & 2nd Day Delivery: Call us at 802-264-6432 for cost of next day or 2nd day delivery. Expedited orders must be received by 10:30 am Eastern time to be shipped the same day for delivery 1 or 2 business days later.

COPYRIGHT: All rating forms, profiles, books, and software programs are copyrighted and must not be altered or reproduced without written permission, subject to fines up to \$100,000. Permission is *not* needed to copy this catalog.

ASEBA®
Research Center for Children,
Youth, & Families
1 South Prospect Street
Burlington, VT 05401-3456

A	Achenbach
S	System of
E	Empirically
B	Based
A	Assessment

Fax: 802-264-6433, 24 hours a day

Tel: 802-264-6432

E-mail: mail@ASEBA.org

Web: www.ASEBA.org

Federal ID: 03-0368227
Dun & Bradstreet: 004726365

Exchanges: Check your order when it arrives. If we made an error, goods are defective, or you need to exchange an item, call us within 30 days for a replacement.

Discounts: Call 802-264-6432 for information on volume discounts and for discounts on products to be used for courses, training programs, and student research projects.

Authorized Distributors: Please contact us regarding distributors in Australia, Bosnia, Brazil, Britain, Canada, Denmark, Estonia, Finland, France, Germany, Greece, Hong Kong, Iceland, Israel, Italy, Japan, Lithuania, New Zealand, Norway, Poland, Romania, Russia, South Korea, Spain, Sweden, Thailand, The Netherlands, Turkey, and USA.



Order Form for ASEBA® Ages 18-59 & 60-90+

To computer score you need: Computer-Scoring Starter Kit or Forms, Manual, and ADM module

ADM Software (Windows® 95, 98, NT, 2000, XP)

Key Entry/Scoring Modules (Single-User License)	Item No.	Windows® Upgrade Price	Serial # for Upgrade (Required)	New Purchase Price	Quantity	Cost
Ages 18-59: ASR & ABCL (Power Tools included)	100	\$60		\$170		
Ages 60-90+: OASR & OABCL (Power Tools included)	025	NA		\$170		
Special offer! Computer-Scoring Starter Kit for Ages 18-59 and 60-90+ Combined— Save \$115 over the cost of all items purchased separately! Includes: 50 each of ABCL/18-59, ASR/18-59, OABCL/60-90+, OASR/60-90+, ADM computer scoring modules for ages 18-59 and 60-90+ combined on one CD-ROM, plus Manuals for the ages 18-59 and 60-90+ instruments. Save \$45 over the cost of both starter kits purchased separately!	119	NA		\$395		

Network Licenses for ADM Software

	Item No.	Price per license	Cost
Additional Licenses	010	# ___ x \$60	

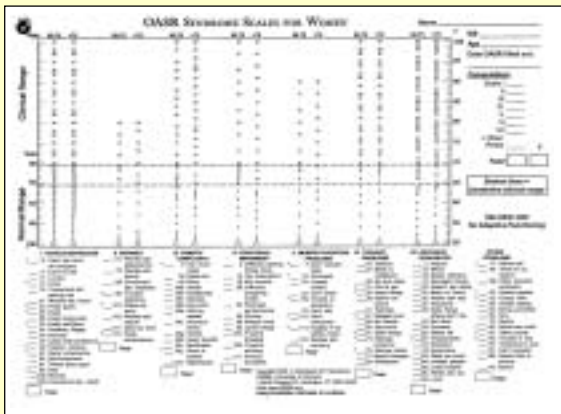
Other Products

	Item No.	Price	Quantity	Cost
Sample Pack. Forms, profiles, instructions for C-TRF, CBCL/1½-5 & 6-18, YSR, TRF, TOF, SCICA, DOF, ASR, ABCL, OABCL, OASR	055	\$25		
ADM-to-SPSS Utility. Export data from ADM for analysis in SPSS	799	\$60		
2004 Bibliography of Published Studies Using the ASEBA On CD in ProCite display. Look up and print your choice of some 5,000 references. Requires Windows® 9X/NT/2000/XP	702	\$50		
2004 Bibliography Update on CD in ProCite display for users who have 2003 Bibliography on CD-ROM.	712	\$20		

Cost of Goods Listed Above \$ _____

DIFFERENCE BETWEEN PROFILE & TEMPLATE FOR HAND SCORING

To hand score you need: Hand-Scoring Starter Kit or Forms, Manual, Profiles, and Templates



Hand-Scored Profile:
one profile is needed to hand score each form completed by a respondent; scores are displayed on graphs.



Template: helpful for hand scoring; reusable cardboard cut-out that helps transfer data from forms completed by respondents to hand-scored profiles.

Forms & Profiles for Ages 18-59		Item No.	Price	Quantity	Cost
	Adult Self-Report. Classic forms completed by 18-59-year-olds.	111	50 for \$25		
	Profiles for Hand-Scoring the ASR for men.	112	50 for \$25		
	Profiles for Hand-Scoring the ASR for women.	113	50 for \$25		
	Reusable Templates for Hand-Scoring the ASR Profiles. (Same for both genders)	114	\$7		
	ASR DSM-oriented Profiles for Men & Women. (Same for both genders)	118	50 for \$25		
	Adult Behavior Checklist. Classic forms completed by people who know the adult well.	121	50 for \$25		
	Profiles for Hand-Scoring the ABCL for men.	122	50 for \$25		
	Profiles for Hand-Scoring the ABCL for women.	123	50 for \$25		
	Reusable Templates for Hand-Scoring the ABCL Profiles. (Same for both genders)	124	\$7		
	ABCL DSM-oriented Profiles for Men & Women. (Same for both genders)	128	50 for \$25		
	Adult Hand-Scoring Starter Kit Includes: 50 ABCL/18-59 forms, 50 ASR/18-59 forms, 50 ABCL & 50 ASR hand-scoring profiles for each gender, 50 ABCL DSM-oriented Profiles, 50 ASR DSM-oriented Profiles, reusable ABCL templates, reusable ASR templates, & the <i>Manual for the Adult Forms & Profiles</i> . Save \$29!	109	\$220		
	Adult Computer-Scoring Starter Kit Includes: 50 ABCL/18-59 forms, 50 ASR/18-59 forms, ADM with Ages 18-59 module for the ABCL & ASR, & the <i>Manual for the Adult Forms & Profiles</i> . Save \$35!	101	\$220		

Forms & Profiles for Ages 60-90+		Item No.	Price	Quantity	Cost
	Older Adult Self-Report. Classic forms completed by 60-90+-year-olds.	011	50 for \$25		
	Profiles for Hand-Scoring the OASR for men.	012	50 for \$25		
	Profiles for Hand-Scoring the OASR for women.	013	50 for \$25		
	OASR DSM-oriented Profiles for Men & Women. (Same for both genders)	018	50 for \$25		
	Older Adult Behavior Checklist. Classic forms completed by people who know the older adult well.	021	50 for \$25		
	Profiles for Hand-Scoring the OABCL for men.	022	50 for \$25		
	Profiles for Hand-Scoring the OABCL for women.	023	50 for \$25		
	OABCL DSM-oriented Profiles for Men & Women. (Same for both genders)	028	50 for \$25		
	Reusable Templates for Hand-Scoring the OABCL & OASR Profiles. (Same for both forms & genders)	014	\$7		
	Older Adult Hand-Scoring Starter Kit Includes: 50 OABCL/60-90+ forms, 50 OASR/60-90+ forms, 50 OABCL & 50 OASR hand-scoring profiles for each gender, 50 OABCL DSM-oriented Profiles, 50 OASR DSM-oriented Profiles, reusable OABCL/OASR templates, & the <i>Manual for the Older Adult Forms & Profiles</i> . Save \$22!	019	\$220		
	Older Adult Computer-Scoring Starter Kit Includes: 50 OABCL/60-90+ forms, 50 OASR/60-90+ forms, ADM with Ages 60-90+ module for the OABCL & OASR, & the <i>Manual for the Older Adult Forms & Profiles</i> . Save \$35!	029	\$220		

Manuals		Item No.	Price	Quantity	Cost
	<i>Manual for the ASEBA Adult Forms & Profiles</i> . 216 pp.	105	\$35		
	<i>Manual for the ASEBA Older Adult Forms & Profiles</i> . 190 pp.	015	\$35		

Quick Reference Guide		Item No.	Price	Quantity	Cost
	<i>Guide for ASEBA Instruments for Adults/18-59 and Older Adults/60-90+</i> , 40 pp.	005	\$10		

Cost of Goods Listed Above \$ _____

Ordering Information



FREE
Ground delivery for orders
≥ \$75 in continental U.S.

Cost of Goods from Page 5 \$ _____

Cost of Goods from Page 6 + _____

Shipping (orders less than \$75) + \$5.00

Shipping Costs for AK, HI, & International Orders
or via UPS Next-Day or 2-Day Air; please contact us + _____

Vermont residents: Add 6% sales tax or your nonprofit tax ID # _____

TOTAL COST IN U.S. DOLLARS \$ _____

Orders by credit card or accompanied by a numbered purchase order can be faxed to 802-264-6433

SHIPPING ADDRESS

Please print. Street address required for all U.S. deliveries and for UPS deliveries outside U.S.

Name: _____ Dept: _____

Institution: _____
Street Address
(not P.O. Box)

City: _____ State or Country: _____ 9-digit Zip: _____

Phone: () _____ - _____ Fax: () _____ - _____ E-Mail: _____

Charge: MasterCard VISA _____ / _____ / _____ / _____ Exp. Date: _____ Amount \$ _____

Name on card: _____ Signature: _____

USER QUALIFICATIONS

The use and interpretation of ASEBA materials require graduate training in standardized assessment procedures of at least the Master's degree level or equivalent, plus thorough knowledge of the relevant Manuals and documentation. Eligibility to purchase ASEBA materials is based on academic degree, licensing, and acceptance of conditions 1-5. The user or supervisor named below agrees to adhere to the following conditions:

1. I will maintain the confidentiality of all assessment results.
2. I will avoid labeling individuals solely on the basis of scale scores.
3. I will strictly abide by copyright laws and will not reproduce or alter copyrighted materials.
4. I will employ and score assessment procedures precisely according to instructions.
5. I will release results only to authorized persons in conformity with professional standards for psychological assessment.

User's signature indicates compliance with the above conditions: Signature _____

Print name _____ E-mail _____ Date _____

If you are a trainee or lack the equivalent of a Master's degree or appropriate license/certificate, please have your supervisor complete the following:

Supervisor's signature _____ Supervisor's name (print) _____

REGISTRATION OF QUALIFICATIONS: Check whether qualifications are for User or Supervisor

Profession _____ Degree _____ License/certif.# _____ State or Jurisdiction _____

PLEASE INCLUDE THIS COMPLETED FORM WITH YOUR FIRST ORDER ONLY.



ASEBA
Research Center for Children, Youth, & Families
One South Prospect Street
Burlington, VT 05401-3456

NON-PROFIT ORG
U.S. Postage
PAID
Burlington, VT
Permit No. 435

*Introducing Our New
Older Adult Self-Report &
Older Adult Behavior Checklist
for Ages 60-90+*

